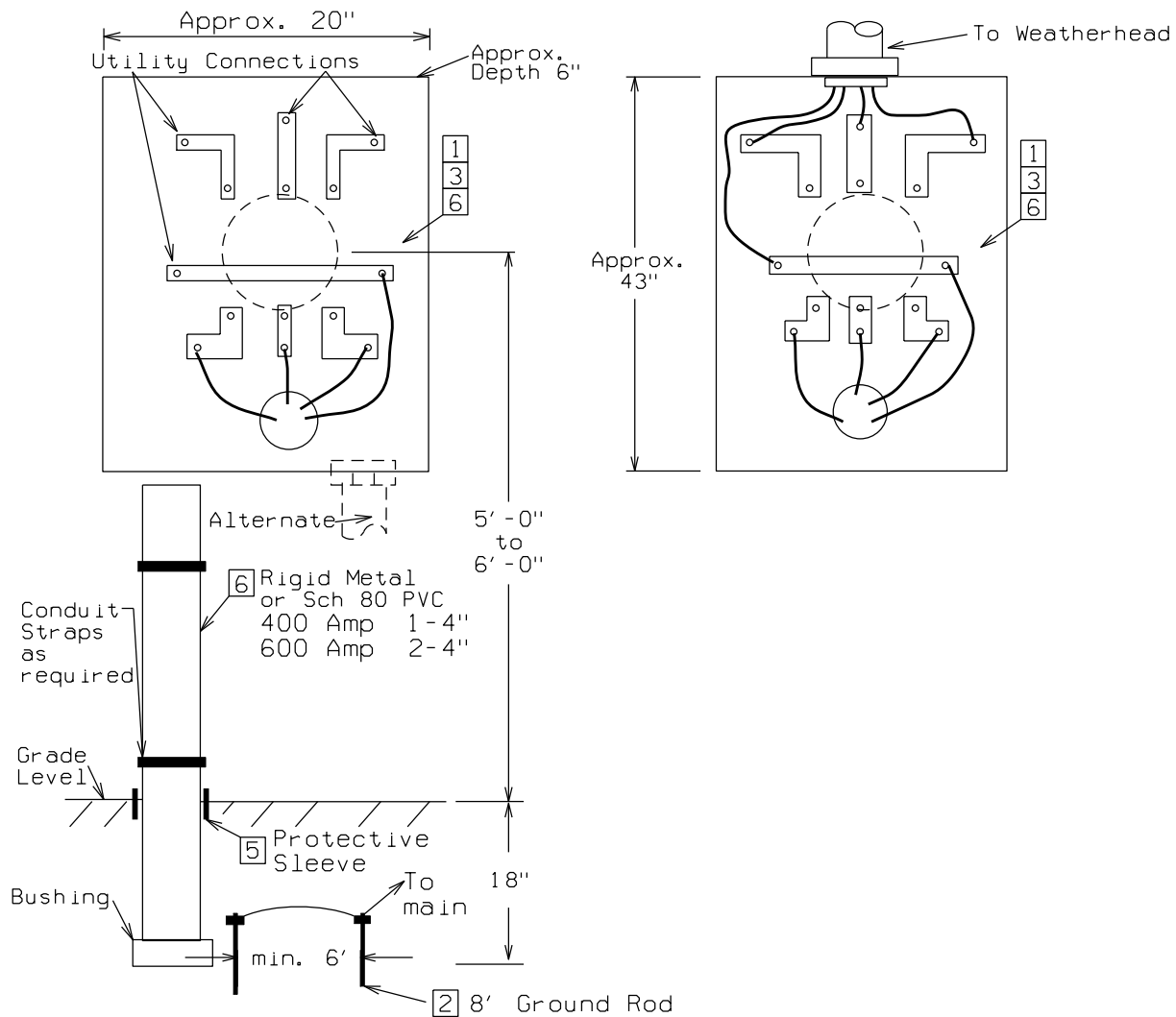


## ONLY NEW 120/208



**NOTES:**

1. Use only for new 120/208 three phase installations.
2. 480 Amp Class Meter. Rated 480 Amps continuous, 600 Amps intermittent. Use 600 Amp CT Cabinets (page 3-4) if continuous 600 Amp rating is needed.
3. Ground rods must be installed at least two feet to the side of any underground cable route. Ground per NEC.
4. The meter socket must be securely mounted.
5. A protective sleeve must be installed at the ground line where the conduit passes thru concrete or blacktop. Common sleeves are a piece of PVC conduit split lengthwise, a larger PVC pipe, or joint compound.
6. This meter socket is only acceptable for new 120/208 three-phase. For existing three-phase 4-wire 120/240 Delta, the wild leg must be installed on the far right side. The wild leg must also be identified with orange tape or by other approved means. Note that 120/240 Delta is not available for new customers.
7. The Company may require conduit for service installations under blacktop or concrete areas. Company service standard for a 400 Amp underground is 4/c 350 KCM Al and parallel 4/c 350 KCM Al for a 600 Amp underground.

### 120/208 Volt 400/600 Amp Three Phase Bolt in Meters

Manufacturer	Catalog # 400 Amp and 600 Amp
Square D (Anchor)	K7
Landis & Gyr (Siemens)	K-7T 9817 Series
Milbank	U4667-X Series
Cutler Hammer	CH9506K7

Revised: 03/10

WSPC/UPPCO SERVICE MANUAL

120/208 VOLT 400/600 AMP THREE PHASE, BOLT-IN METER SOCKET