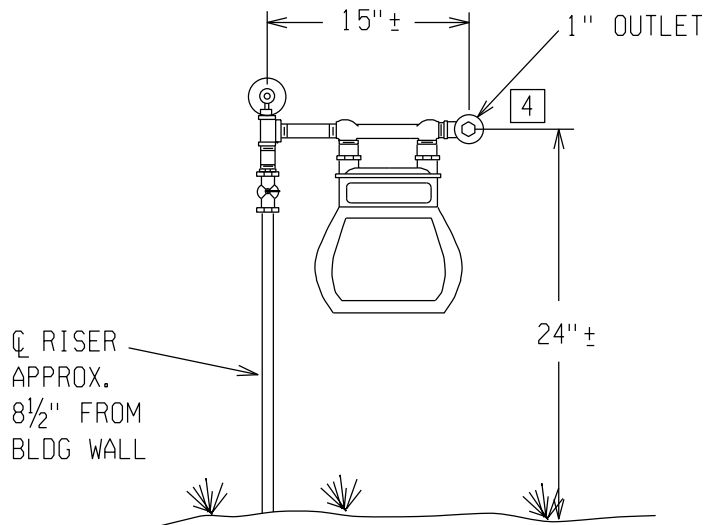


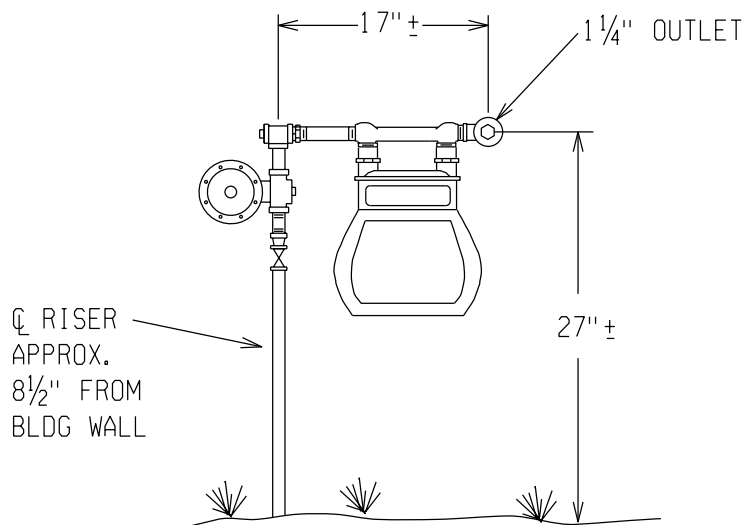
RESIDENTIAL METER

(Up to 250 CFH)



COMMERCIAL/INDUSTRIAL

(250-900 CFH)



NOTES:

1. CUSTOMER PIPING MUST BE ELECTRICALLY BONDED PER THE NATIONAL ELECTRICAL CODE. SEE PAGE 6-3 IN THE WEB VERSION OF THE MANUAL.
2. THE FUEL RUN MUST BE WRAPPED THRU THE WALL. A DOUBLE WRAP OF ELECTRICAL TAPE IS ACCEPTABLE.
3. PROTECTION OF THE GAS METER/REGULATOR MAY BE REQUIRED.

A FOUR-INCH OR SIX-INCH POST FILLED WITH CONCRETE MAY ALSO BE REQUIRED IN TRAFFIC/PARKING AREAS. SEE PAGE 4-3.

FOR PROTECTION FROM ICE AND SNOW, SEE PAGE 4-6.

4. IF FLEXIBLE CSST TUBING IS USED FOR FUEL PIPING, ADDITIONAL METER SUPPORT MUST BE ADDED. THE USE OF 1" STEEL PIPE AT THE OUTLET OF THE METER BAR AND THROUGH THE WALL IS RECOMMENDED FOR THIS PURPOSE.

Revised: 03/10

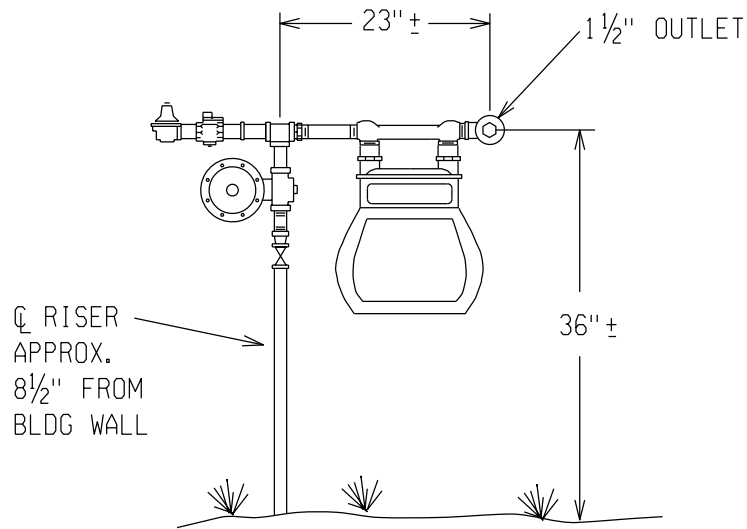
WPSC/UPPCO SERVICE MANUAL

METER SIZE DIMENSIONS

4-2a

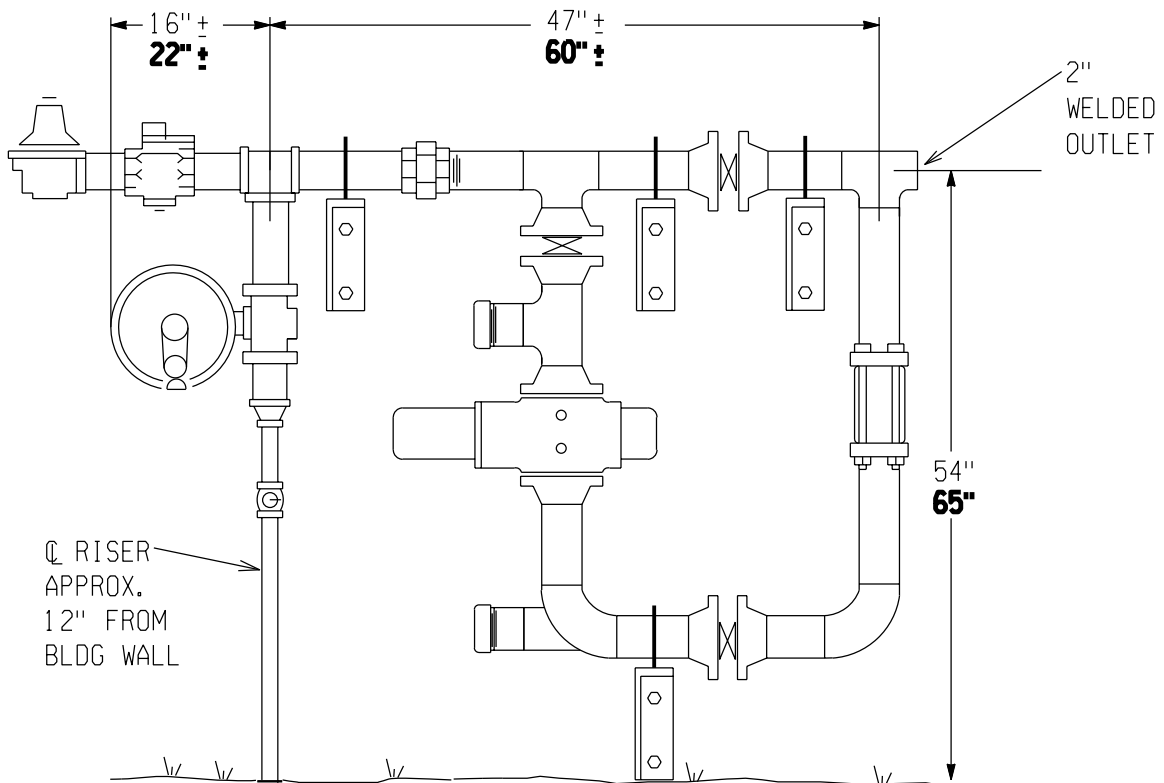
COMMERCIAL / INDUSTRIAL

(900-2200 CFH)



COMMERCIAL / INDUSTRIAL

(2,200-3,500 CFH)
(4,000-16,000 CFH)



Revised: 03/10