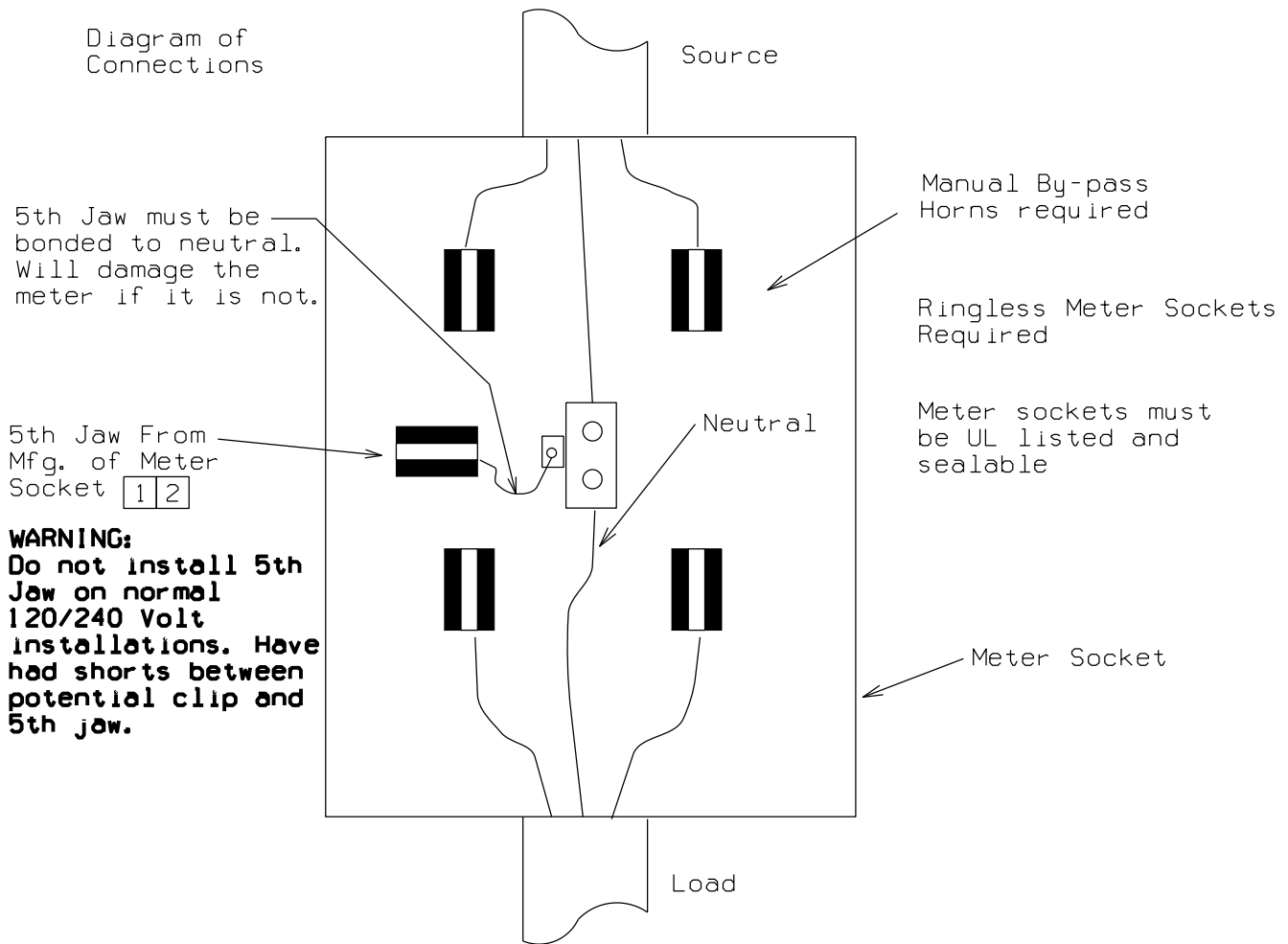


Diagram of Connections



NOTES:

1. A fifth jaw can be added to most new-style, single phase 120/240 meter sockets for 120/208 single phase service. The fifth jaw shall be added in the 9 o'clock position as pictured and securely attached (Milbank Snap-in Jaws are not acceptable; they fall apart).
2. This voltage is common in or near commercial areas. It is also common for large apartment complexes.
3. There are some existing installations with the fifth jaw in the 6 o'clock position (as compared to the normal 9 o'clock position) or with a wire jumper between the meter and the meter socket. These should be corrected, if possible, when upgrading the wiring.
4. Single phase service drop application shall be limited to 200 Amp. Larger installations shall have a three phase service drop with the single phase meters and connected loads balanced on all phases. The single phase meters must also be limited to 200 Amp.

Revised: 03/10

WPSC/UPPCO SERVICE MANUAL

SINGLE PHASE 120/208 0-200 AMP, NETWORK